

BK51SY

REPLACES: 24.01.18
REVISED: 06.11.19

FITTING INSTRUCTIONS

KIA SORENTO 04/15-09/17 BIG TUBE® PROTECTION BAR VEHICLE FRONTAL PROTECTION SYSTEM (VFPS) FOR AIR BAG & ADR COMPLIANT VEHICLES

Check installation hardware before commencing.

CAUTION. HEADLIGHT WASHER CAPS MUST BE REMOVED BEFORE BUMPER IS UNCLIPPED FROM GUARD.

1. Lift bonnet
2. Remove nine 10 mm head bolts from under body guard and let hang.
3. Remove two 10mm head bolts from outer edge of grille, four black push pull clips from top of radiator panel, one Philips screw from rear wing (per side). Six 10 mm head bolts from underside of bumper, three push pull clips from front of guard liner per side. Unplug bumper lights and parking sensors if required. Remove headlight washer caps from headlight washers. Carefully pull out on rear wing to unclip away from guard, pull forward to unclip away from headlight and remove bumper from vehicle. **See figure 1**
4. Unplug air temperature sensor, horn, radar unit and headlight washer line, remove two 10 mm head nuts and eight 12 mm head bolts from bumper support and remove.
5. Remove lower stiffener from bumper support, two 10mm head nuts (per side). **See figure 2.** Refit onto ECB steel mount using four M6 x 30 bolts, flat washers spring washers and nuts (supplied).
6. Remove lower half of air dams to allow ECB Steel mount to fit, two 10 mm head bolts and 1 push pull clip per side. **See figure 3.**
7. Fit ECB steel mount onto end of chassis rail using eight M8 x 40 bolts, flat washers and spring washers (supplied). Centralise mount and **tighten bolts.** **See figure 4.**
8. Fit horn onto ECB steel mount using M6 x 30 bolt, flat washers, spring washer and nut (supplied). **See figure 5.**
9. Fit air temperature sensor unit onto ECB steel mount **See figure 6A and 6B.**
10. Remove headlight washer line from bumper support and fix in rear of protection bar with zip ties. **See figure 7.**
11. Extend radar unit wiring harness with using supplied 5 core wire and solder connectors. **See figure 8.**
12. Fit Perspex cover plate onto ECB alloy radar mount using three M6 x 25 bolts, flat washers and nyloc nuts (supplied) Note: Head of the bolt to outside of Perspex. **See figure 9.**
13. Fit radar mount onto protection bar using two M6 x 35 bolts, flat washers and nyloc nuts (supplied). **See figure 10.**

14. Remove radar unit from bumper support and fit onto ECB alloy mount in protection bar using four original Philips head screws. **See figure 10.**
15. Remove parking sensors and parking sensor harness from the back of bumper. Run original equipment wiring harness into rear of ECB protection bar with sensor connectors in position for sensors to be fitted. Install parking sensors into ECB protection bar by carefully placing sensor with original equipment silicon ring into pre-cut hole. Twist parking sensor into holder and connect wiring harness. Using a zip tie (supplied) wrap under parking sensor and attach through hole in top of the mounting plate. **See figure 11 and 12.** Zip tie wiring harness into rear of ECB protection bar.
16. Fit ECB LED indicator / park lights into protection bar as per instructions supplied with the LED indicator kit. **See figure 13**
17. Attach ECB fog lights to protection bar. Place M6 x 20 bolts, spring washers (supplied) through light mount from inside and attach nut to top. Slide assembly into light mount in Protection bar and centralize light to hole. **TIGHTEN FIRM ONLY. See figure 14**
18. Attach 6mm clip lock trim (supplied) to top of ECB protection bar. **NOTE:** Trim off lower edge on an angle so trim will sit flush with end of protection bar. **See figures 15, 16 and 17**
19. Attach 6mm clip lock trim (supplied) to tow hook cut outs and the lower vents in ECB protection bar. **NOTE:** Trim off lower edge on an angle so trim will sit flush with protection bar
20. Disconnect indicator and parking lights on vehicle. Install ECB quick click wiring harnesses (supplied) between disconnected harness and indicator / park lights on vehicle. Run wiring out from under lights ensuring clearance from sharp edges and moving parts.
21. Connect ECB Quick Click fog light wiring harness (supplied) into original wiring harness.
22. Refit bumper in the reverse steps of 2 to 5. **See figure 18**
23. Fit ECB protection bar to inside of ECB steel mounting bracket using three M12 x 40 bolts flat washers, spring washers and nuts (supplied) (per side). **Finger tighten only.**
24. Align ECB protection bar with vehicle and tighten all bolts. **See figures 19 and 20**
25. Connect and check operation of ECB indicator / park lights, ECB fog lights and headlamp washers. Adjust headlamp washers if required.

ENSURE NUMBER PLATE IS CLEARLY VISABLE

Note: When fitting/refitting the licence plate to the vehicle, ensure there is no obstruction to licence plate vision in accordance with local authorities. If required relocate licence plate to an alternate location.

Further VFPS Notes:

- a) Do not attach VFPS to the vehicle using anchorages not intended for this purpose (e.g. engine mounting bolts).
- b) Do not use this product for any vehicle make or model, other than those specified by the VFPS manufacturer.
- c) Do not remove the plaque or label from the VFPS.
- d) Do not modify the structure of the VFPS in any way.
- e) No accessory or fitment should project forward of the VFPS forward profile.
- f) **ENSURE THESE INSTRUCTIONS ARE LEFT WITH VEHICLE OWNER AND/OR OPERATOR.**

IMPORTANT INFORMATION

Periodically check bolts and nuts for correct tightness, especially if travelling on rough roads

FITTING KIT

1 – Steel mount	2 – M6 x 20 bolts
1 – Sonar mount (BK51 S3AL)	24 – M6 flat washers
1 – 5 core wire 300mm	10 – M6 nyloc nuts
1 – Perspex cover 210 X 100 X 2mm (NBF160SY A2PL)	2 – M6 nuts
Place Perspex in own bag. Do not package with Bolts and nuts.	1 – ECB Indicator / Park light / DRL kit (ICLED105ECB)
6 – M12 x 40mm bolts	1 – Quick Click Kit (IC15KISOHIPDH)
12 – M12 flat washers	1 – ECB fog light kit
6 – M12 spring washers	1 – Quick Click Kit (IC15KISOFOGH)
6 – M12 nuts	2 – Fog light surrounds
8 – M8 x 40mm Bolts	2 – 250mm length 6mm clip lock trim
16 – M8 flat washers	2 – 500mm length 6mm clip lock trim
8 – M8 spring washers	1 – 2500mm length 6mm clip lock trim
8 – M8 nuts	8 – 300mm Zip ties
5 – M6 x 30 bolts	10 – Crimp connectors
3 – M6 x 25 bolts	10 – Solder connectors
2 – M6 x 35 bolts	



Figure 1. Pull out on rear wing to unclip away from guard and light.

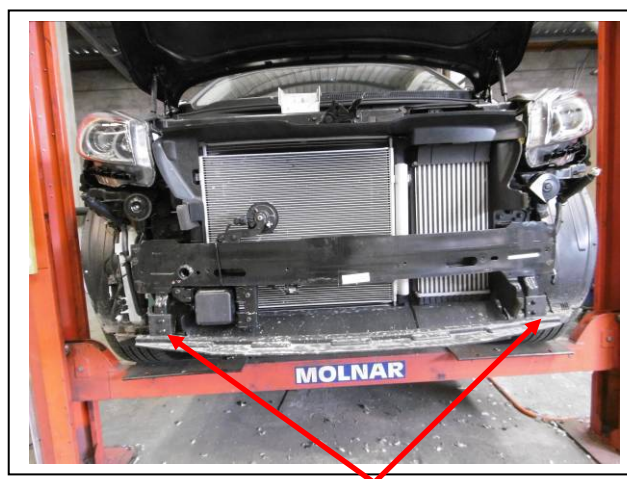


Figure 2. Lower stiffener.

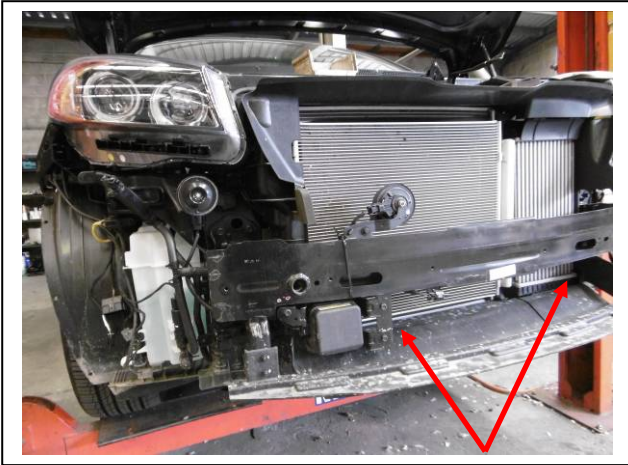


Figure 3. Lower half of air dams.



Figure 4. Steel mount fitted.

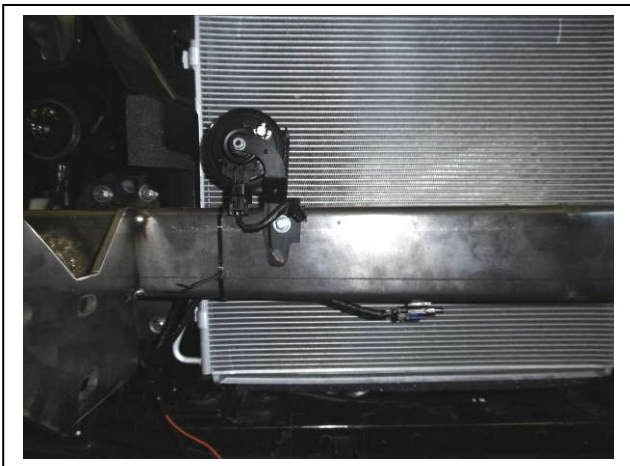


Figure 5. Horn location



Figure 6A. Temperature sensor location.



Figure 6B. Push plastic clip through hole so lugs protrude through.

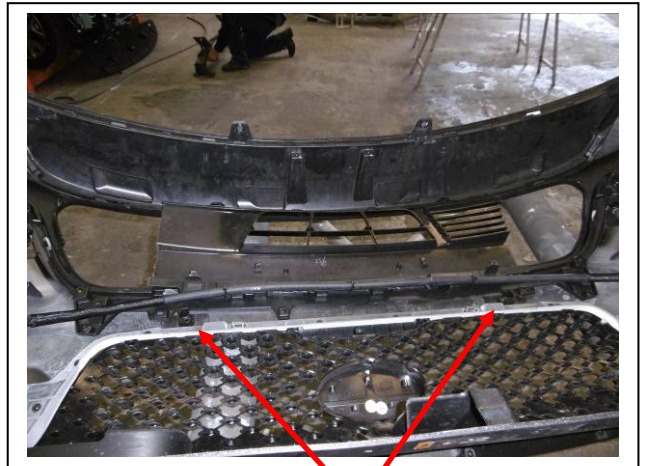


Figure 7. Washer line location.



Figure 8.

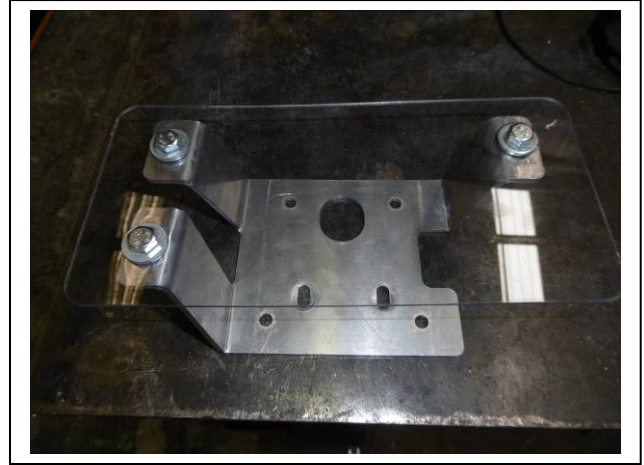


Figure 9.

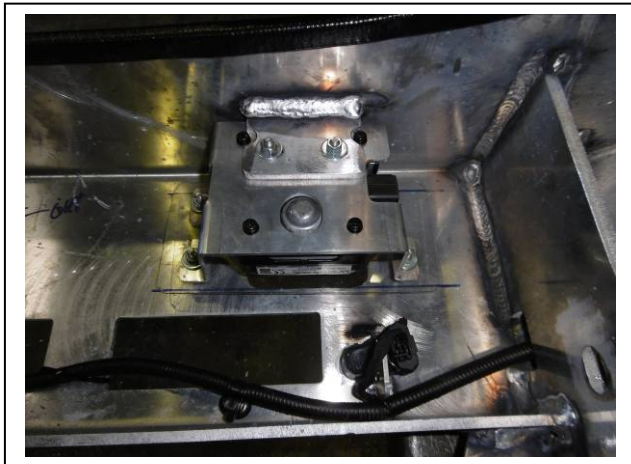


Figure 10.

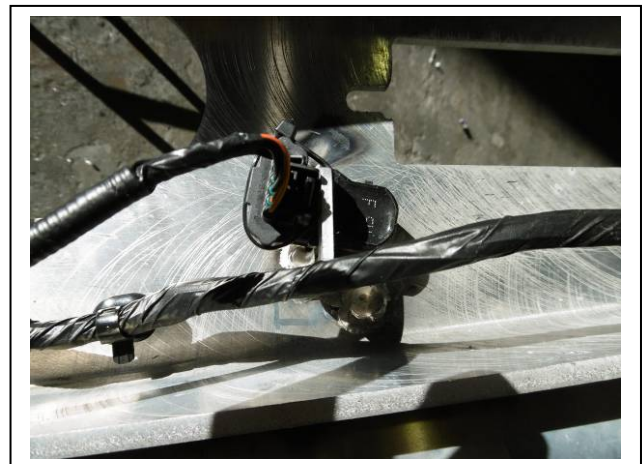


Figure 11.

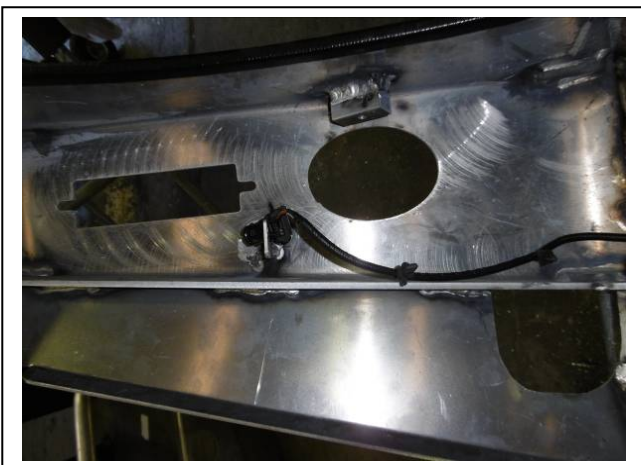
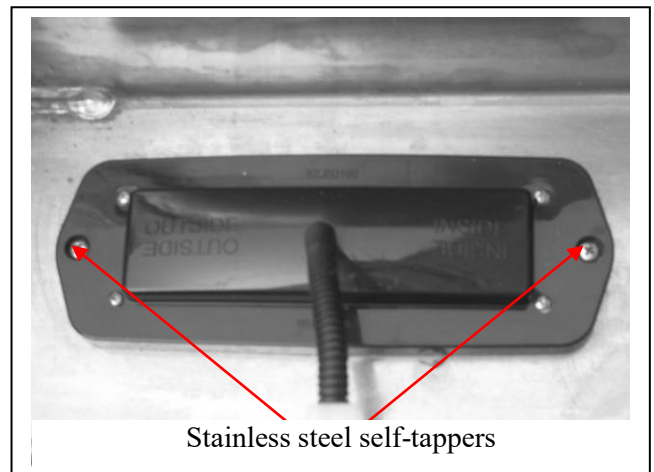
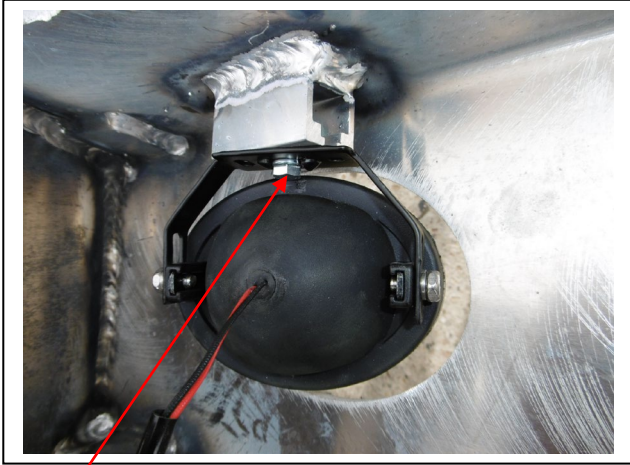


Figure 12.



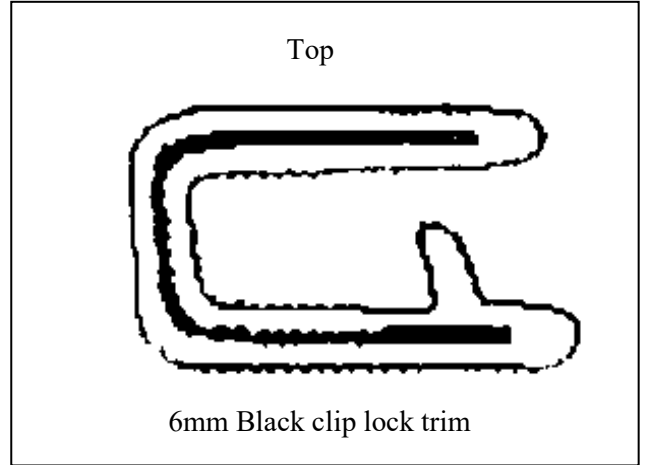
Stainless steel self-tappers

Figure 13.



M6 bolt

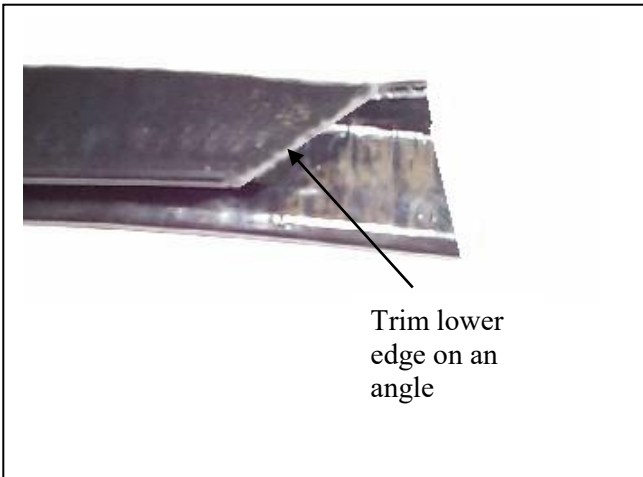
Figure 14



Top

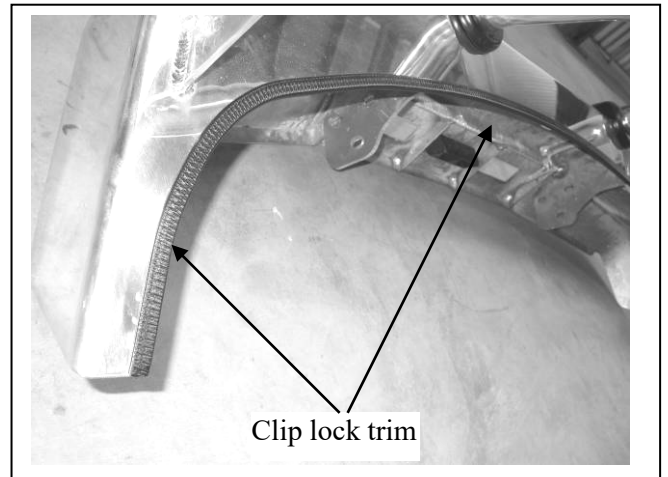
6mm Black clip lock trim

Figure 15



Trim lower
edge on an
angle

Figure 16



Clip lock trim

Figure 17

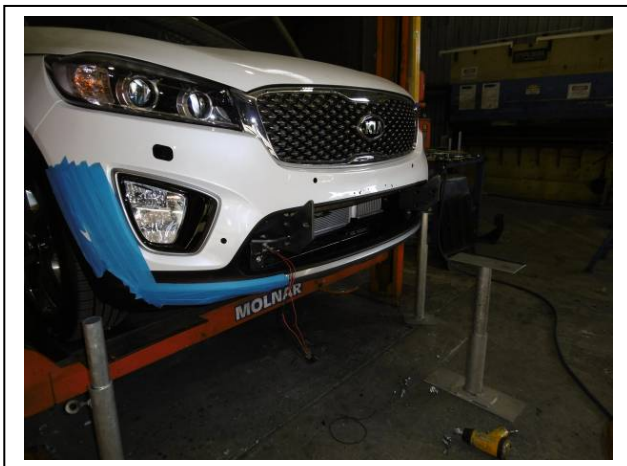


Figure 18



Figure 19



**WORLD'S BEST
ALLOY BULLBARS**

**Lighter
Stronger
Better!**

A: 29 Snook St Clontarf QLD 4019
A: PO Box 122 Margate QLD 4019
P: 07 3897 5700
F: 07 3283 1168
E: info@ecb.com.au
W: ecb.com.au
W: customalloy.com.au



Figure 20



**Lighter
Stronger
Better!**

A: 29 Snook St Clontarf QLD 4019
A: PO Box 122 Margate QLD 4019
P: 07 3897 5700
F: 07 3283 1168
E: info@ecb.com.au
W: ecb.com.au
W: customalloy.com.au



We value your comments

Dear Fitter,

ECB would like to know how you went with the installation of this product. We value your comment and may need to contact you to clarify some details so please complete your contact details clearly.

We would appreciate if you could complete as many of the following details as possible.

Your Name:	Your contact No.
Product Part No.	Product Invoice No.
Product Description:	Make, model, and year of vehicle:
Product Work Order No.	Company your from/Company product purchased from:

Date of Fitment: ____/____/____

Was the fitting hardware supplied complete? Yes No

If no what was not supplied

Did the installation go well? Yes No

Please provide comments

Please draw diagrams if you need to.

Post to
Reply Paid 122
PO Box 122
Margate QLD 4019

Fax to
(07) 3283 1168

DESPATCH CHECKLIST BK51SY

Work Order #		See other side of this page for photos of all mounts
Finish:		
Transport:		
Due Date:		

- OC.... Steel mounts
- BK.....1 – Bolt Kit.
- BK.....1 – ECB Indicator / Park light / DRL kit (ICLED105ECB)
- BK.....1 – ECB fog light kit
- BK.....1 - Quick Click Kit (IC15KISOHIPDH)
- BK.....1 – Quick Click Kit (IC15KISOFOGH)
- BK.....1 – 2500mm Length 6mm clip lock trim
- BK.....2 – 500mm Length 6mm clip lock trim
- BK.....2 – 250mm Length 6mm clip lock trim
- BK.....1 – 300mm length 5 core wire
- BK.....1 – 210 X 100 X 2mm Perspex cover (NBF160SY_A2PL)
- BK.....1 – Sonar mount (BK51_S3AL)
- OC..... 2 - 6mm Air Vents – **fitted to bar**
- OC..... 2 – ECB Over riders – **fitted to bar**



Is this product “the best it can be” Yes
 If **NO** fix before continuing

All parts checked and completed by:

Nut and bolts: _____ Date / /

Order control: _____ Date / /

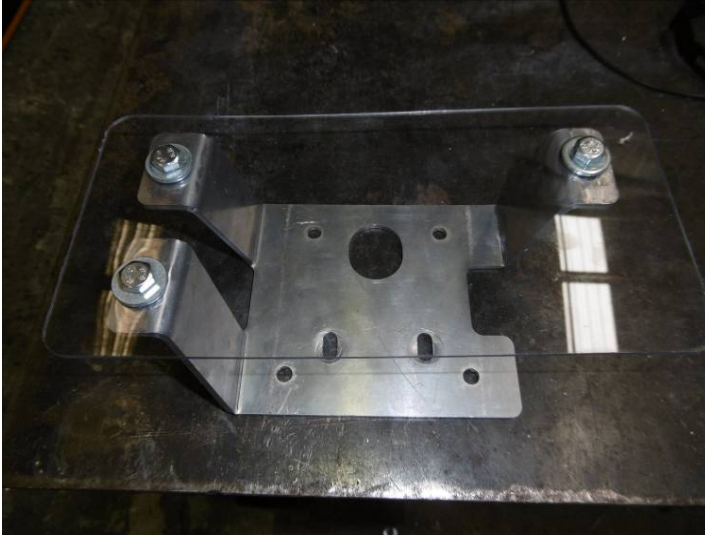
Final wrap check: _____ Date / /



**WORLD'S BEST
ALLOY BULLBARS**

**Lighter
Stronger
Better!**

A: 29 Snook St Clontarf QLD 4019
A: PO Box 122 Margate QLD 4019
P: 07 3897 5700
F: 07 3283 1168
E: info@ecb.com.au
W: ecb.com.au
W: customalloy.com.au



Wrapper's initials / Checker initials